

Color C60/C70 Printer



Color C60/C70 Printer

Amazing flexibility and the power to do more.

FUJI XEROX 



Productivity, scalability and professional image quality, all-in-one.

The Color C60/C70 Printer provides application versatility and professional image quality, and is flexible enough to grow with your business. It's an all-in-one solution that can boost productivity in any environment.

Color C60/C70 Printer Quick Facts

- **Speed:** Up to 60/70 ppm colour and 65/75 ppm black and white
- **Single-pass Scanner:** Up to 200 images per minute (ipm)
- **Resolution:** 2400 x 2400 dpi
- **Toner:** Fuji Xerox Emulsion Aggregation (EA) Toner with ultra-low melt technology
- **Media Weights (Maximum):** Up to 300 gsm and up to 220 gsm for auto duplexing
- **Media Sizes:** Up to 13 x 19.2 in. / SRA3+ / 330 x 488 mm

A flexible and affordable solution from the start.

Your teams want the flexibility and productive workflow of a multifunction device. Your graphics, creative and production teams want a higher level of quality and finishing. The Color C60/C70 Printer offers the best of all worlds.

The Color C60/C70 allows you to print, copy and scan – including scan and print with PC, USB or email. It can even print from virtually any smart phone or tablet. That's how the Color C60/C70 boosts any team's efficiency.

Capture new business and keep high-value colour printing in-house.

- Print at up to 60/70 pages per minute colour and up to 65/75 pages per minute black and white. And with easy set-up and automated workflows, you can handle quick turnarounds in style.

- Media versatility – both coated and uncoated stocks up to 300 gsm.
- Inline finishing options offer a professional polish with stapling, hole-punching, folding and face trimming for presentations, brochures and reports.
- A choice of print servers allows you to boost colour management and streamline labour-intensive processes.
- Variable data capabilities let you capitalise on personalised applications for direct mail.

Exceed expectations.

The Color C60/C70 Printer is engineered to bring out the best in digital printing. Whether you need to create a customer brochure, a captivating proposal or presentation, an eye-catching poster, or even window decals or polyester signs, you get stunning results every time.

Transform – and work simpler, smarter.

When work gets simpler, people are more productive. The Color C60/C70 Printer simplifies the process of capturing, editing and storing documents – all the tools you need to get quality work done more efficiently.

Capture productivity.

- **True multitasking.** Scan, print, copy, all at once. Preview scans on-screen and avoid mistakes.
- **Save time and steps.** The Color C60/C70 offers superior scanning and allows you to send the files anywhere. Email, store to folder, to PC, to USB. Create a searchable PDF or XDW in one simple step.
- **Make it personal with XMPie®.** With variable data printing software from industry-leader XMPie®, you can expand into high-value variable applications – with low-cost and with ease.

Secure and confident.

- **Private Charge Print, Charge Print and Secure Print.** Keep documents private by holding print jobs in the queue until the user enters the password.
- **Password protected PDFs.** This feature requires a password to open and view a sensitive scan.
- **Standard 256-bit encryption.** The gold standard in keeping your data secure – Image Overwrite. Automatically erases images on the device.

Control and track costs easily.

- **Xerox® Standard Accounting.** This software is a standard feature that resides locally on the device. It provides superior accounting features that lets you track, analyse and limit device usage. It lets you know where your costs are coming from so you can take control of them.





Promote your image and stand out from the crowd.

Benchmark image quality that you expect. Results that truly delight.

Innovation comes standard.

- **Vibrant colour and incredible detail.** With our 2400 x 2400 dpi resolution, images are rich with crisp text so your output will always impress.
- **Excellent image quality.** Our Emulsion Aggregation (EA) Low Melt Toner technology is chemically grown, so the small, consistent particles produce great quality with smooth transitions and an offset-like finish.

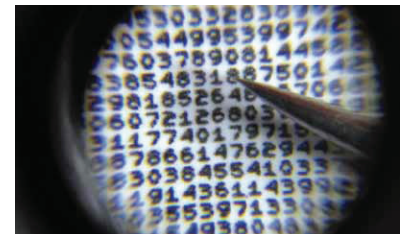
It's your image. Unleash your creativity.

- **Match company colours, logos and offset presses.** The Color C60/C70 Printer offers licensed PANTONE® matching for spot colours to the PANTONE MATCHING SYSTEM®, PANTONE GOE™ and PANTONE PLUS. It's also Fogra Certified for matching offset colour presses.
- **True Adobe® PostScript® 3™ certification and the latest Adobe PDF Print Engine (APPE).** These features plus blazing speeds means your creativity is never restricted.

Total control, when you need it most.

- **Simple Image Quality Adjustment (SIQA)*.** Use this toolkit for quick adjustment of registration.

* Available with the EX and EX-i C60/C70 Print Server Powered by Fiery.



Color C60/C70 Printer:
0.6 point font Xerox® MicroFont pictured with a pin.

We've combined class-leading print resolution (2400 x 2400 dpi) and the unique properties of Fuji Xerox EA Toner with ultra-low melt technology. The result is stunning detail and an offset-like finish and vibrant colour.



Whatever the size and scope of your work, we'll fit your needs.

Feeding Options



- 1 High-Capacity Feeder:** Adds 2,000 sheets of 8.5 x 11 in / A4 (up to 200 gsm).



- 2 One Tray Oversized High-Capacity Feeder:** Adds 2,000 sheets in sizes from 13 x 19 in. / SRA3 / 330 x 488 mm (up to 300 gsm). Storage Cabinet included.



- 3 Two Tray Oversized High-Capacity Feeder:** Adds 4,000 sheets in sizes from 13 x 19 in. / SRA3 / 330 x 488 mm (up to 300 gsm).

Finishing Options



- 4 Offset Catch Tray:** 500 sheet stacking.
- 5 BR Finisher:** Gives you advanced finishing function at a great value – offsetting, hole punch, staple (1,2,4 staple) plus stacking 3,000 sheets and available C Fold / Z Fold Unit.
- 6 BR Booklet Maker Finisher:** Provides all the advanced finishing of the BR Finisher with additional booklet making capabilities.
- 7 Convenience Stapler:** Staple up to 50 sheets of 24 lb. bond / 90 gsm media (Work Surface included).



- 8 GBC® AdvancedPunch™*:** Lets you create professionally bound documents in-house by combining printing, punching and collating into one convenient step.
- 9 Standard Finisher and Booklet Maker Finisher**:** This finishing module enables coated booklets, brochures and bi-fold mailers as well as stacking, stapling and hole punching. It also includes an interposer input tray. Even more versatility can be obtained with the addition of the optional tri-fold, Z Fold and tabloid Z Fold module for this finisher.
- 10 Xerox® SquareFold® Trimmer Module*:** Enhances the power of the Standard Finisher with booklet maker with square fold of cover sheets and face trimming to produce booklets.

*Requires Interface Module and Standard Finisher; **Requires Interface Module

Finishing Applications



Sort and Collate



Staple



Hole Punch



Booklet



C Fold



Z Fold



Tri-Fold



Tabloid Z Fold



Face Trim



Square Fold

Print servers to fit every workflow.

We offer a choice of print servers, so you're sure to find one that fits.

Integrated Server

Count on superior colour and high-end workflows.

EX-i C60/C70 Print Server Powered by Fiery

World-class colour and workflow tools that put you in command.



External Server

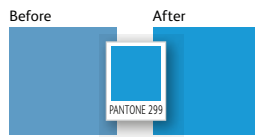
Powerful server with colour tools, workflow capabilities, and blazing speed, all at your fingertips. The ultimate in control and consistency.

EX C60/C70 Print Server Powered by Fiery

Fiery® technology increases your profits by delivering high-impact documents with vibrant images and colour that exceed your customers' expectations.



Transparency Handling



Spot Colour Callouts



The Adobe PDF Print Engine – or APPE – is the gold standard in PDF processing, producing PDF files that flow through your shop with a minimum of intervention. No more transparency problems. No more colour matching challenges. Instead, you will see faster turnarounds, more accurate results – and more returning customers.

Create exciting new applications – easily finished inline.

The printing world is exploding with new applications and new ways to use colour, media and finishing.

The superb image quality, robust media latitude, flexible finishing options, modularity and server options of the Color C60/C70 Printer, integrated with enterprise workflows, make it the perfect device for capturing new business, keeping more applications in-house.

Grab their attention.

The Color C60/C70 allows you to think big. Print signs, ID Cards, Window Clings, Labels and Polyester Synthetics. Add impact to your special events with vivid, full colour, high image quality signage and Point of Sale materials.

Our special polyester EA Low Melt Toner fuses the output to polyester using a proprietary chemical bonding methodology, ensuring superior image quality on specialty substrates including polyester and more.



Production printing with enterprise workflows at an affordable price.

Image quality, ease of use, productivity, media latitude, feeding and finishing options, plus world-class workflow solutions are at your fingertips. Grow your digital colour printing capabilities and reduce costs with the Color C60/C70 Printer.

- **Brochures** – easily create professional, colourful brochures with productivity-boosting inline folding and square fold trimming.
- **Presentations / Newsletters** – inline stapling and hole punching makes producing presentations and newsletters quick and easy.
- **Manuals and Reports** – inserted tabs keep annual reports and financial reports organised, while stapling and GBC® AdvancedPunch™ hole-punching keep pages secure.
- **Posters** – expanded media range lets you run eye-catching posters on sturdy coated media – up to 330x488 mm. (13x19", SRA3 can be printed)
- **Specialty Media and Photo Specialty applications** – impeccable colour and photo-finish image quality will keep customers coming to you for all today's latest photo applications



Technology

- Load-while-run toner and paper capability
- Line Screens 600, 300,200 and 150 Clustered Dot, 200 Rotated Line Screen
- SIQA (Simple Image Quality Adjustment) Available with EX and EX-i Print Server powered by Fiery. Advanced Registration Technology for tighter control, Front to Back Registration ±1.2 mm
- Custom paper set-up/alignment profiles

- EA low melt toner
- Built-in decurling for coated / heavy-weight media (Finisher D4 and Interface Module)

Durability

- Duty Cycle*:300000

* Duty cycle - Maximum volume capacity expected in any one month. Not expected to be sustained on a regular basis.

Graphic Arts Credentials

- Fogra certification, PANTONE® Matching System
- PANTONE® GOE™, PANTONE® Plus

Specifications for the Color C60 / C70 Printer

Basic Specifications/Print Function

Item	Color C60 Printer	Color C70 Printer
Colour Capability	Full colour	
Printing Resolution	2400×2400 dpi	
Continuous Print Speed*1	[Colour] A4: 60 ppm, A3: 30 ppm [B / W] A4: 65 ppm, A3: 33 ppm	[Colour] A4: 70 ppm, A3: 35 ppm [B / W] A4: 75 ppm, A3: 37 ppm
Paper Size*2	[Tray 1] Standard size: Max. A3, Min. A5 Custom size: 140 × 182 mm to 330 × 458 mm [Tray 2] Standard size: Max. A3, Min. A5 Custom size: 140 × 182 mm to 297 × 432 mm [Tray 3, 4] A4, Letter, B5 [Bypass Tray] Standard size: Max. A3, Min. A6 Custom size: 140 × 182 mm to 330 × 488 mm	
Paper Weight	[Tray 1, 2, 3, 4] 64 to 220 gsm [Bypass Tray] 64 to 300 gsm*3	
Paper Tray Capacity*4	Standard: 500 sheets × 2 -Tray+870 sheets+1140 sheets+Bypass Tray 250 sheets Optional functions: High Capacity Feeder B1 2000 sheets × 1-Tray Optional functions: High Capacity Feeder B1-S 2000 sheets × 1-Tray Optional functions: High Capacity Feeder C1-DS 2000 sheets × 2-Tray Maximum Paper Capacity: 7260 sheets (Standard + High Capacity Feeder C1-DS)	
Output Tray Capacity*5	500 sheets (A3)	
Power Supply	AC 220 - 240 V, 10 A, 50/60 Hz common	
Maximum Power Consumption*6	2.4 kW or less	
Dimensions*7	W 1022 × D 804 × H 1392 mm	
Weight*8	247 kg	

*1: When continuously printing a single document. 64 to 105 gsm, uncoated paper. Print speed may be reduced depending on conditions of output data, as well as on whether auto image quality adjustment is performed, on whether the job includes a mixture of paper sizes and types, and other reasons. *2: Image loss width: Lead edge 4.0 mm, Tail edge 4.0 mm, Front 3.5 mm, and Rear 3.5 mm. *3: Auto duplex printing is supported for paper weights ranging from 64 to 220 gsm. *4: 80 gsm paper *5: Catch tray, 80 gsm paper *6: Main unit with catch tray. *7: Includes main unit and control panel. Excludes output tray and external print server. With the Bypass Tray closed. *8: Includes main unit, photoreceptor, and control panel. Excludes output tray, external print server, paper, and toner.

Scan Function

Item	Description
Paper Size	Max. 297×431.8 mm (A3)
Scan Resolution	600 × 600 dpi, 400 × 400 dpi, 300 × 300 dpi, 200 × 200 dpi
Scan Speed*	B / W: 100 ppm Colour: 100 ppm (2 sided scanning B / W: 200 ppm, Colour: 200 ppm)
Scan Method	Scan to Folder (TWAIN interface support), Scan to PC (FTP, SMB), Scan to e-mail

* For A4 Long edge feed, 200 dpi, store to folder. The scanning speed varies depending on the documents.

Copy Function

Item	Description
Scan Resolution	600 × 600 dpi
Printing Resolution	2400 × 2400 dpi (High resolution photo) 600 × 600 dpi (Text/Text-Photo/Photo/Map)
First Copy Output Time	B / W: 4.1 sec. (A4 / Monochrome priority mode) Colour: 6.5 sec. (A4 / Colour priority mode)

Duplex Automatic Document Feeder

Item	Description
Paper Size	Standard size: Max. A3, Min. A5 Custom size: 139.7 × 210 mm to 297 × 432 mm
Paper Weight	38 to 200 gsm (Duplex: 50 to 200 gsm)
Capacity*1	250 sheets
Feeding Speed*2	B / W: 80 ppm (A4 long edge feed) Colour: 75 ppm (A4 long edge feed)

*1: 80 gsm paper *2: Copy mode

High Capacity Feeder B1 (Optional)

Item	Description
Paper Size	Max. A4, Min. B5
Paper Weight	64 to 220 gsm*1
Paper Tray Capacity	2000 sheets × 1-Tray*2
Dimensions	W 389 × D 610 × H 377 mm
Weight	29 kg

*1: For uncoated paper. *2: 80 gsm paper

High Capacity Feeder B1-S (Optional)

Item	Description
Paper Size	Standard size: Max. A3, Min. A6*1 Custom size: 100 × 148 mm to 330 × 488 mm*2
Paper Weight	64 to 300 gsm*3
Paper Tray Capacity	2000 sheets × 1-Tray*4
Power Supply	AC 100 - 120 V, 2.5 A / AC 220 - 240 V, 1.5 A, 50/60 Hz common
Maximum Power Consumption	360 W or less
Dimensions	W 988 × D 762 × H 992 mm
Weight	160 kg*5

*1: When Postcard kit is used. *2: When loading custom size paper whose length in the paper direction is 100 to 182 mm, be sure to attach Postcard kit in the tray. *3: For uncoated paper. *4: 80 gsm paper *5: The bypass tray and the Large Size UI Kit are not included.

High Capacity Feeder C1-DS (Optional)

Item	Description
Paper Size	Standard size: Max. A3, Min. A6*1 Custom size: 100 × 148 mm to 330 × 488 mm*2
Paper Weight	64 to 300 gsm*3
Paper Tray Capacity	2000 sheets × 2-Tray*4
Power Supply	AC 100 - 120 V, 5.0 A / AC 220 - 240 V, 3.0 A, 50/60 Hz common
Maximum Power Consumption	720 W or less
Dimensions	W 988 × D 762 × H 992 mm
Weight	190 kg*5

*1: When Postcard kit is used. *2: When loading custom size paper whose length in the paper direction is 100 to 182 mm, be sure to attach Postcard kit in the tray. *3: For uncoated paper. *4: 80 gsm paper *5: The bypass tray and the Large Size UI Kit are not included.

Interface Module* (Optional)

Item	Description
Power Supply	AC 100 V, 2.5 A – AC 240 V, 1.5 A, 50/60 Hz common

* Interface Module is necessary for connecting the Finisher D4 to the Color C60/C70 Printer.

Folder Unit CD1 (Optional)

Item	Description	
Z fold half sheet	Paper Size	A3, B4, 11 × 17"
	Paper Weight	64 to 90 gsm
Tri-fold	Paper Size	A4, Letter
	Paper Weight	64 to 90 gsm
Paper Capacity*1	Tri-fold	30 sheets
Power Supply*2	AC 220 – 240 V, 0.5 A, 50/60 Hz common	
Maximum Power Consumption	120 W or less	
Dimensions	W 232 × D 726 × H 991 mm	
Weight	53 kg	

*1: 80 gsm Paper *2: Power supply separate from the main unit is required.

Folder Unit D4 (Optional)

Item	Description	
Z fold half sheet	Paper Size	A3, B4, 11 × 17"
	Paper Weight	64 to 90 gsm
Tri-fold	Paper Size	A4, Letter
	Paper Weight	64 to 90 gsm
Paper Capacity*	Tri-fold	30 sheets
Dimensions	W 200 × D 725 × H 1165 mm	
Weight	40 kg	

* 80 gsm Paper

Specifications for the Color C60 / C70 Printer

C3 Finisher (Optional)

Item	C3 Finisher	C3 Finisher with Booklet Maker
Type	Output Tray	Sort / Stack
	Finisher Tray	Sort (Offset available) / Stack (Offset available)
	Booklet Tray	- / Sort / Stack
Paper Size	Output Tray	Standard size: Max. A3, Min. A6 Custom size: 100 x 148 mm to 330 x 488 mm
	Finisher Tray	Standard size: Max. A3, Min. B5 Custom size: 203 x 182 mm to 330 x 488 mm
	Booklet Tray	- Standard size: Max. A3, Min. A4 Custom size: 210 x 279 mm to 330 x 457 mm
Paper Weight	Output Tray	64 to 300 gsm
	Finisher Tray	64 to 300 gsm
	Booklet Tray	- 64 to 220 gsm
Paper Capacity*1	Output Tray	500 sheets (A4)
	Finisher Tray	[Without stapling] A4: 3000 sheets B4 or larger: 1500 sheets Mixed size stacking*2: 300 sheets [With stapling] A4: 200 sets or 3000 sheets B4 or larger: 100 sets or 1500 sheets
	Finisher Tray	[Without stapling] A4: 1500 sheets B4 or larger: 1500 sheets Mixed size stacking*2: 300 sheets [With stapling] A4: 200 sets or 1500 sheets B4 or larger: 100 sets or 1500 sheets
	Booklet Tray	- 20 sets*3
Staple	Capacity	50 sheets*4
	Paper Size	Max. A3, Min. B5
	Position	Single stapling, Dual stapling
Punch	Number of punch holes	2 / 4 or 2 / 3 (Optional functions)
	Paper Size	Max. A3, Min. B5
	Paper Weight	64 to 200 gsm
Booklet Finishing	Capacity	- Saddle staple: 16 sheets*5 Middle fold: 5 sheets
	Paper Size	- Max. A3, Min. B5
	Paper Weight	- Saddle staple: 64 to 220 gsm*6 Single fold: 64 to 220gsm
Dimensions	W 840 x D 589 x H 1056 mm W 1075 x D 726 x H 1056 mm (With Folder Unit CD1)	W 898 x D 589 x H 1056 mm W 1370 x D 726 x H 1056 mm (With Folder Unit CD1)
	Weight	45 kg, 101 kg (With Folder Unit CD1) 62 kg, 118 kg (With Folder Unit CD1)

*1: 80 gsm Paper *2: When larger size sheets are stacked on top of smaller size sheets. *3: For 16 sheets/set booklet. Paper may not be accepted depending on paper type and other usage conditions. *4: For 64 to 90 gsm paper. *5: 15 sheets with a cover. *6: When cover is applied, the staple capacity can decrease depending on type and weight of paper being used and other conditions.

SquareFold® Trimmer*1 (Optional)

Item	Description
Paper Size	Same as the paper size of the Finisher D4 booklet tray.
Paper Weight	Same as the paper weight of the Finisher D4 booklet tray.
Number of sheets for trim and square fold*2	5 to 20 sheets
Trim Dimensions	2-20 mm
Booklet Tray Capacity*3	20 sets (15 sheets bind and below), 15 sets (16 sheets bind and above)
Power Supply	AC 100 V, 0.8 A - 240 V, 0.4 A, 50/60 Hz common
Maximum Power Consumption	192 W or less
Dimensions	W 1272 x D 725 x H 552 mm
Weight	100 kg

*1: SquareFold® Trimmer requires Finisher D4 with Booklet Maker and Interface module. *2: Requires saddle staple. *3: When cover is applied, the staple capacity can decrease depending on type and weight of paper being used and other conditions.

Notes

- To comply with paper weight specifications, it is recommended to use Fuji Xerox recommended paper. Document may not be printed correctly depending on usage conditions.
- The minimum availability period for functional spare parts that are needed to repair the product is 7 years after the termination of the product.

Reproduction Prohibitions Please note that reproduction of the following is prohibited by law : Domestic and foreign currencies, government-issued securities, and national bonds and local bond certificates. Unused postage stamps, post cards, etc. Certificate stamps stipulated by law. Reproducing works forming the subject matter of copyright (literary works, musical works, paintings, engravings, maps, cinematographic works, drawings, photographic works, etc.) is not permitted unless the reproduction is for the purpose of personal use, family use or other similar uses within a limited circle.

Finisher D4*1 (Optional)

Item	Finisher D4	Finisher D4 with Booklet Maker
Type	Output Tray	Sort / Stack
	Finisher Tray	Sort (Offset available) / Stack (Offset available)
	Booklet Tray	- / Sort / Stack
Paper Size	Output Tray	Standard size: Max. A3, Min. A6 Custom size: 100 x 148 mm to 330 x 488 mm
	Finisher Tray	Standard size: Max. A3, Min. B5 Custom size: 203 x 182 mm to 330 x 488 mm
	Booklet Tray	- Standard size: Max. A3, Min. A4 Custom size: 210 x 279 mm to 330 x 457 mm
Paper Weight	Output Tray	64 to 300 gsm
	Finisher Tray	64 to 300 gsm
	Booklet Tray	- 64 to 300 gsm
Paper Capacity*2	Output Tray	500 sheets (A4)
	Finisher Tray	[Without stapling] A4: 3000 sheets B4 or larger: 1500 sheets Mixed size stack*3: 350 sheets [With stapling] A4: 200 sets or 3000 sheets B4 or larger: 100 sets or 1500 sheets
	Finisher Tray	[Without stapling] A4: 2000 sheets B4 or larger: 1500 sheets Mixed size stack*3: 350 sheets [With stapling] A4: 200 sets or 2000 sheets B4 or larger: 100 sets or 1500 sheets
	Booklet Tray	- 20 sets*4
Staple	Capacity	100 sheets*5
	Paper Size	Max. A3, Min. B5
	Staple Position	Single stapling, Dual stapling
Punch	Number of punch holes	2 / 4 or 2 / 3 (Optional functions)
	Paper Size	Max. A3, Min. B5
	Paper Weight	64 to 200 gsm
Booklet Finishing	Capacity	- Saddle staple: 20 sheets*6 Single fold: 5 sheets
	Paper Size	- Max. A3, Min. A4
	Paper Weight*7	- Saddle staple: 64 to 220 gsm Middle fold: 64 to 220 gsm Single fold: 64 to 300 gsm
Interposer	Paper Size	Max. A3, Min. B5
	Paper Weight	64 to 220 gsm
	Paper Capacity	200 sheets
Power Supply	AC 100-240 V, 2 A, 50/60 Hz common	
Maximum Power Consumption	203 W or less	
Dimensions	W 1050 x D 727 x H 1165 mm W 1250 x D 727 x H 1165 mm (With Folder Unit D4)	W 1055 x D 727 x H 1165 mm W 1255 x D 727 x H 1165 mm (With Folder Unit D4)
	Weight	115 kg, 155 kg (With Folder Unit D4) 150 kg, 190 kg (With Folder Unit D4)

*1: Finisher D4 requires Interface Module. *2: 80 gsm Paper *3: When larger size sheets are stacked on top of smaller size sheets. *4: For 15 sheets/set booklet. When over 15 sheets/set, the booklet tray capacity is 15 sets. Paper may not be accepted depending on paper type and other usage conditions. *5: 65 sheets for sizes exceeding A4. *6: A customer engineer can change the maximum number of booklet sheets, within the limits (up to 25 sheets). *7: For a Booklet/Bi-Fold job, 64-300 gsm paper can be used as a cover sheet. When cover is applied, the staple capacity can decrease depending on type and weight of paper being used and other conditions.

GBC® AdvancedPunch™*1 (Optional)

Item	Description
Paper Size	A4 (long edge feed)
Paper Weight	75 to 216 gsm*2
Punch Type*3	21-Hole Punch Comb Bind, 20-Hole Punch Comb Bind
	34-Hole Twin Loop Binding (Round), 23-Hole Twin Loop Binding (Round)
	34-Hole Twin Loop Binding (Square), 23-Hole Twin Loop Binding (Square)
	4-Hole Punch 4 Ring, 2-Hole Punch 2 Ring
	12-Hole VeloBind®, 47-Hole Colour Coil™ Bind, 34-Hole ProClick®
Power Supply	AC 230 V, 1.2 A, 50 Hz
Maximum Power Consumption	276 W or less
Dimensions	W 305 x D 978 x H 724 mm
Weight	70 kg

*1: GBC® AdvancedPunch™ requires Finisher D4 with or without Booklet Maker and also Interface Module. *2: Uncoated paper (75 to 216 gsm) or coated paper (106 to 216 gsm) can be used as a cover sheet. *3: Customer replaceable die sets.

For Your Safety
Before using the product, read the Instruction Manual carefully for proper use. Use the product with the power source and voltage specified. Be sure to establish ground connection. Otherwise, electronic shock may result in the case of a failure or short circuit.

astragraphia

HEAD OFFICE (021) 390 9444, 390 9190, 314 5925, 230 2429, 230 2460 • JAKARTA MA (021) 392 5966 • JAKARTA I (021) 6570 4071 • JAKARTA II (021) 6570 4072 • JAKARTA III (021) 6570 4073 • JAKARTA IV (021) 782 9182 • Bogor (0251) 837 2708 • JAKARTA V (021) 5220330 (Hunting) • JAKARTA VI (021) 5220330 (Hunting) • JAKARTA VII (021) 5220330 (Hunting) • TANGERANG (021) 552 6818 (Hunting) • Cilegon (0254) 848 4251, 383106 • KARAWANG (021) 8261 6042 • Depo Karawang (0267) 644 441, 643 093 • Serpo Cikarang (021) 8983 0627 • BANDUNG (022) 420 1032, 420 4564, 420 1033 (Direct) • Cirebon (0231) 226 087 • Tasikmalaya (0265) 336 706 • SEMARANG (024) 844 8880, 844 8881 • Solo (0271) 724 814 • Yogyakarta (0274) 582 016 • Purwokerto (0281) 625270, Hp 0813 2572 5999 • SURABAYA I (031) 534 0175 (Hunting), (031) 548 2682 (Direct) • Kediri (0354) 770523 • Gresik (031) 393 0073 Hp. 0816 1570 1900 • SURABAYA II (031) 534 0175 (Hunting), (031) 548 2682 (Direct) • Malang (0341) 480167, Lukman Effendy / Hp 0812 529 8430 • Jember (0331) 333 941, Hp. 0812 323 8189 • Pasuruan (0343) 630 678, Hp. 0813 3292 9099 • DENPASAR (0361) 410 277, (0361) 433 709, 432 734 • Mataram / Lombok (0370) 645 582 • Kupang (0380) 840 263 • Benete 0812 382 6351 • Dilli (670) 7234726, (670) 7339221, MEDAN (061) 787 1000 • Pematang Siantar 0812 656 3064 • Rantau Prapat 0812 6310 7394 • Sibolga 0852 7788 8353 • Banda Aceh 0853 7206 7716 • BATAM (0778) 412 173, 412 363 • Tanjung Pinang (0771) 733 0266 • PEKANBARU (0761) 33519, 47756 • Pangkalan Kerinci (0761) 43969 Hp. 0812 7541699 • Duri Hp. 0813 9880 2162 • Padang (0751) 787 8551 • Perawang Hp. 0812 764 8509 • Muara Bungo (0747) 322564 Hp. 0813 6772 9908 • Dumai Hp. 0812 670 9683 • Jambi (0741) 445382 • PALEMBANG (0711) 355 100 • Bangka Belitung (0717) 431855 • Tanjung Enim (0734) 451 552 • Lampung (0721) 251 106 • Bengkulu Hp. 0812 7300 6622, 0821 8149 9578 • BALIKPAPAN (0542) 733 307, 741 0698 • Samarinda 0821 5193 0349 • Tarakan (0551) 25763 • Bontau (0548) 3036692 • Sangatta (0549) 22456 • Pontianak (Jakarta 3) (0561) 707 7140 • Banjarmasin (0511) 325 2520, 326 1804 • Palangkaraya (0536) 323 5834 • Batu Licin (0518) 71302 • Tanjung (0526) 2022827 • MAKASSAR (0411) 8111 811, 854 868, 858 901 • Kendari (0401) 324 582 • Sorowako Hp. 0811 440 076 • Palu (0451) 457767, Hp 0813 4137 8352 • Manado (0431) 857683, 857643 • Ambon (0911) 311 554 • Sorong (0951) 331 569 • Biak (0981) 23416 • Jayapura (0967) 523 349 • Timika (0901) 323 511 • Manokwari 0986 214 326, 0852 3711 7417 • Luwuk 081 2429 4219 • Hotline (021) 390 9190, 390 9444, www.documentsolution.com