

## DocuCentre-V

C7776 / C6676 / C5576 / C4476 / C3376 / C3374 / C2276



# DocuCentre-V

C7776 / C6676 / C5576 / C4476 / C3376 / C3374 / C2276

Speed and quality for faster, more efficient business



## Silent, comprehensive environmental performance Smooth operation with facial recognition

Two cameras on the device recognize users as they approach, then display a dedicated screen for fast, smooth operation.

Thanks to support for cloud services and enhanced compatibility with mobile devices (such as smartphones and tablets), you can input and output while on the go for even greater convenience.

DocuCentre-V series makes for a comfortable work environment — including quiet operation — allowing you to more effectively concentrate on your work.

Copy  
Print

	DocuCentre-V C7776	DocuCentre-V C6676	DocuCentre-V C5576	DocuCentre-V C4476	DocuCentre-V C3376	DocuCentre-V C3374	DocuCentre-V C2276
Colour	70 ppm <sup>*1</sup>	65 ppm <sup>*1</sup>	50 ppm <sup>*1</sup>	45 ppm <sup>*1</sup>	35 ppm <sup>*1</sup>	30 ppm <sup>*1</sup>	25 ppm <sup>*1</sup>
B/W	70 ppm <sup>*1</sup>	65 ppm <sup>*1</sup>	55 ppm <sup>*1</sup>	45 ppm <sup>*1</sup>	35 ppm <sup>*1</sup>	30 ppm <sup>*1</sup>	25 ppm <sup>*1</sup>

Scan

Colour, B/W : 80 ppm<sup>\*2,3</sup>  
1 pass, 2 sided scanning : 150 ppm<sup>\*2,3</sup>

Fax

Super G3 Supported

\*1: A4 LEF

\*2: Fuji Xerox Standard Paper (A4 LEF), 200 dpi, to Folder.

\*3: With Duplex Automatic Document Feeder B1-PC. With Duplex Automatic Document Feeder B1-C, scanning speed is 70 pages/minute (colour and B/W), and 1 pass, 2 sided scanning is not available.



# DocuCentre-V

C7776 / C6676 / C5576 / C4476 / C3376 / C3374 / C2276

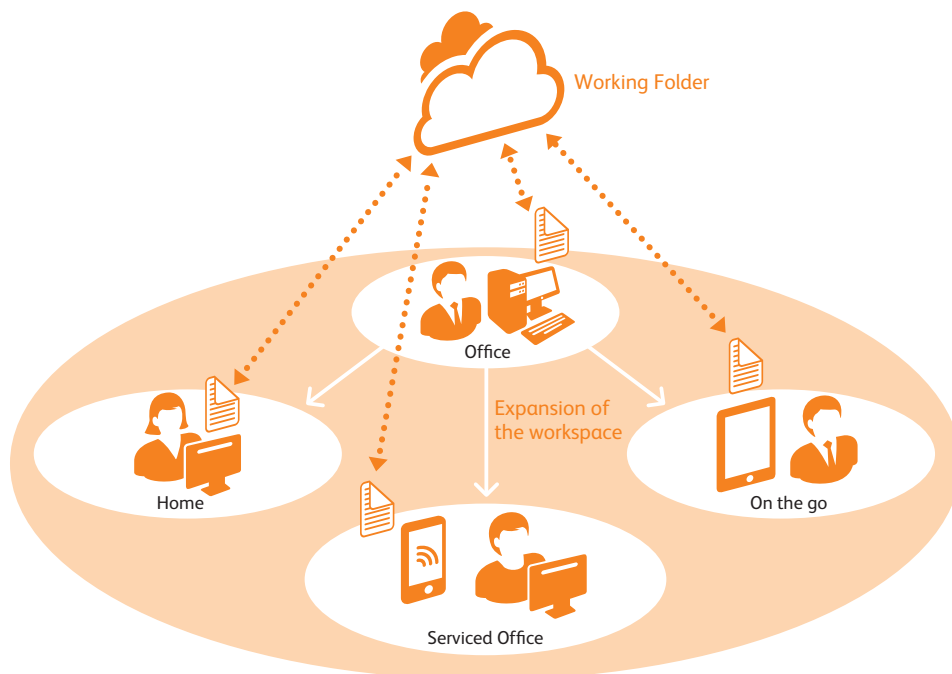
## Work wherever you are, however you like.

On the road, at home, dashing off to a client in the morning, or returning home in the evening.

There's no doubt about it: Workstyles are changing.

To support people in all facets of their jobs, Fuji Xerox offers comprehensive mobile computing functions and keeps everyone connected via the Cloud.

We always look for ways to help bring out your best, wherever and however you work.



### Smooth, impressive client presentations

Eliminate the hassle and worry of lugging around bulky, confidential documents.

Working Folder, our Cloud-based document sharing service, keeps your documents secure and your briefcase light.

Use a PC or Fuji Xerox multifunction device to store documents in Working Folder, then access and view with a smart device while at your client's office.

You can also print from a tablet or smartphone to multifunction devices when out of the office via wireless LAN.

# Smother application of information

## Tablet device can also be used for printing.

You can also use your iPhone or iPad, or Android™ device to print via a wireless LAN access point. This ensures more smooth and speedy leverage of information.



## The easy-to-use control

Panel can be set to use single-touch, easily recognisable icons for frequently used functions. Four different gestures — tap, double-tap, drag and flick — can be used to scroll and switch pages smoothly and quickly.



### Flick

Touch the screen with your finger, and simply swipe the screen with your finger to scroll and switch pages.



### Drag

Touch and hold a control such as buttons with your finger, and then slide your finger to move it.



### Tap/Double-tap

Tap the screen (twice) with your finger to make a selection or decision.



## Various File Formats and Processing Supported

Users can convert scanned documents and data to numerous file formats including TIFF, JPEG, DocuWorks document, PDF and XPS<sup>1</sup> before you send them by email. OCR processing can assist in searching for and compressing documents to reduce their size for e-mail communications<sup>2</sup>, and password settings can also be set.

\*1: Stands for XML Paper Specification.

\*2: Optional.

## Conversion to Editable Word and Excel® Files

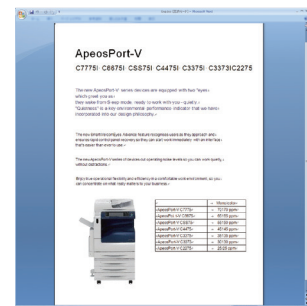
Scanned data can also be converted to files in Word or Excel® format, and hardcopy documents can be converted into editable digital documents. The DocuCentre-V series devices can also convert tables and illustrations to objects suitable for reproduction with Word and Excel®.

\* Optional.

An auxiliary function that allows you to reuse materials such as text, tables, shapes, and photos on paper documents. However, we cannot guarantee the accuracy when they are reused.



Output media



Word data

## Remote Power Control (Power Off)

Devices located some distance from system administrators may be switched off remotely by PC. In large facilities such as a campus or factory building, this function can reduce the time and labour required to walk to every device and switch it off individually.

## A Wider Product Lineup for Effective Deployment and Management

This series is noted for high environmental performance thanks to advanced technologies such as an IH-Fuser and LED print head, and now provide 25 to 70 sheets/minute. Thus users can share common operability and consumables among several machines, if introduced. The machines, having instantaneous force to wake up from Sleep Mode in 3.1 seconds\*, will answer the requirements for high-speed processing and strategic deployment.

\* For DocuCentre-V C3376/C3374/C2276. 10.5 seconds for DocuCentre-V C5576/C4476. 14.0 seconds for DocuCentre-V C7776/C6676.

## Duplex Automatic Document Feeder Offering High Productivity

Duplex Automatic Document Feeder on the machine is equipped with the "one path duplex scanning feature" to scan both sides of a duplex document at one time, realizing high speed scanning of 150 pages/minute\* for both colour and monochrome originals. Besides holding up to 130 sheets of documents, the light weight design, weighing only 11 kg, assists smooth operation for users to open/close it. This provides offices with high productivity.

\* With Automatic Document Feeder B1-PC.160 pages/minute when Quiet Mode is set to OFF.

## Support for banner printing

You can now print beautiful posters in your office with the DocuCentre-V series of devices. They are capable of handling paper sizes up to 320 mm x 1200 mm, opening up a range of new print and copy possibilities.

\* Printable area is 305 x 1194 mm.

\* Long-paper printing is not supported when a finisher is attached.

\* Only supports PCL driver and Windows® of Adobe® PostScript® 3™.



## Light and Heavy Paper Support

The DocuCentre-V series can handle a wider range of paper weights than ever before. The standard paper tray supports weights from 52 gsm up to 300 gsm\*. This provides opportunities to create a broad range of business documents and reports, as well as marketing materials such as journals and POS material.

\* Documents may not be printed correctly depending on usage conditions.

## Hole punched paper and envelope are also supported

Punched paper suitable for filing is supported. Also, no wrinkles occur during printing on envelope of up to 70 gsm, which is usually used.

## Print in different environments

The DocuCentre-V series can be shared and printing can be performed in two independent network environments. With two network ports, you can maximise the use of the multifunction device while maintaining tight security of having separate network.

\* Optional.

\* Print function only. Supported protocol: TCP/IP (lpd, Port9100) only.

## Easy printing wherever you are

### Print Utility for iOS / Android

This free Fuji Xerox application lets you output web pages, pictures, DocuWorks and PDF documents<sup>1</sup>, and import scanned documents to mobile devices. You can configure it to print N-up and duplex. Server-less On-demand printing<sup>2</sup> is also available by assigning authentication information. Additionally, the application is supported by standard printing frameworks on Android™ OS 4.4 or later. More applications allow output using Print Utility for Android.

\* Print Utility can be downloaded for free from the App Store (iOS) or Google Play™(Android).

\*1: Outputting DocuWorks and PDF documents requires DocuWorks Viewer Light for iPhone/iPad or DocuWorks Viewer Light for Android.

\*2: Optional.

### Google Cloud Print

By registering the multi-function device with Google Cloud Print, you can output documents via the cloud from Android™ devices, Chromebook™ and computers. Giving permission to office visitors provides them with a printing environment without connecting to your Intranet.

\* Google Cloud Print is a web printing service from Google.



### Wi-Fi Direct®

Wi-Fi Direct® can be used with a wireless LAN adaptor. You can connect personal mobile devices directly to the multi-function device then print. Using a wireless LAN access point allows you to separate connections from business mobile devices and computers on an Intranet.

\* Optional.

### AirPrint

Supports AirPrint, iOS and OS X standard print functions. You can output e-mails and documents created with Apple applications, including Safari, Map, Numbers, Pages and Keynote, and Microsoft applications such as Word, Excel® and PowerPoint®.



### Mopria™ Print

You can output on a Mopria-certified device from Mopria Print Service\* installed on mobile devices without installing different printing applications of models or manufacturers.

\* Mopria Print Service can be downloaded for free from Google Play™. (Android™ 4.4 or later)



# Advanced functionality and easy to use

## Working Closely With You

The new DocuCentre-V series automatically exits from Sleep mode as users approach the device. Two "eyes", using a real-time proximity camera and a pyroelectric heat sensor, detect when a user is approaching and wakes it from Sleep mode so it is ready to use immediately. This clever technology simplifies operational processes and saves both time and energy. What's more, a face recognition camera can tell more accurately who the user is, and prepare the device to suit their particular applications.



## Recognise the Wishes of Users

Smart WelcomEyes Advance 2\* is able to discern users as they approach the device and detect when they want to use it. It can also recognise user faces and apply that information for fast, simple authentication. Detection accuracy is better than existing Smart WelcomEyes Advance\*, and offers enhanced convenience.

\* Optional.

## Simpler Scanning Operation

Scanning failure happens often. Settings are too many and complex. Manual setup every time for routine task is troublesome. In order to solve such problems, installed applications improve scanning usability and offer automatic operation.



**1** This incredible technology uses an infrared pyroelectric sensor to monitor thermal changes in the vicinity of the device, to detect a person approaching.

**2** The user detection camera verifies human motion, such as the direction their toes are pointing, to determine whether the person wishes to use the device.

**3** It also offers sophisticated, yet simple, user authentication method through face recognition. The face recognition camera can recognise the face of the user standing in front of the device, making authentication simple and fast.

\* The local authentication mode must be enabled.

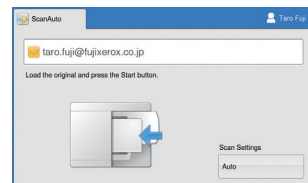
## Image Recognition through a Reputable Processor

The technology of human/face recognition camera uses an Image Recognition through a Reputable Processor for vehicle-mounted cameras. Rapid recognition of users enables the device to minimise power consumption, and ensure that it is ready to use immediately.

## Easier scanning for personal use

ScanAuto determines paper orientation and simplex/duplex for you. Destinations for scanned data can be selected from the send history. Moreover, when authenticated, your e-mail address will be automatically input.

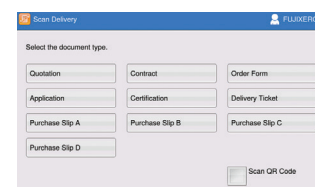
\* ScanAuto is pre-installed, but must be configured before use.



## Easy to scan and save file for individual work

Scan Delivery\* provides automatic operation to name a file in accordance with pre-defined rule and save scanned data directly in specified folder instead of using PC to save them. You can improve operating efficiency in routine scanning task.

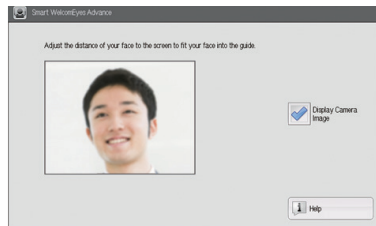
\*Optional.



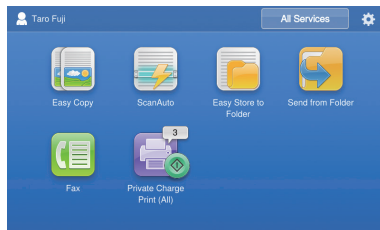
## Face Recognition to Display Appropriate Screens

When the “face recognition camera” recognises the user’s face, the device opens a screen displaying specific buttons, selected by the user, on the control panel. These personal screens are immediately displayed without an IC Card, and users are not required to go through several steps on the control panel. Users can begin working on the device with “zero waiting time”.

\* The local authentication mode must be enabled. (Authentication by face recognition supports up to 100 users.)



face recognition



Your own operation screen starts.

## Authentication Based on Registered User Information

DocuCentre checks user information registered on the machine to manage authentication, when local authentication is enabled. The job history function can tally usage of the device on a user basis. By adding a built-in IC Card Reader\* to the device, IC Card authentication can be used. This feature can also provide access control to specific functions on the device, enhancing both security management and user convenience.

\* Optional. External and Built-in IC Card Readers are available. IC Card Reader cannot be used concurrently with Smart WelcomEyes Advance.



Built-in IC Card Reader

IC Card Reader

IC Card Reader for HID Prox

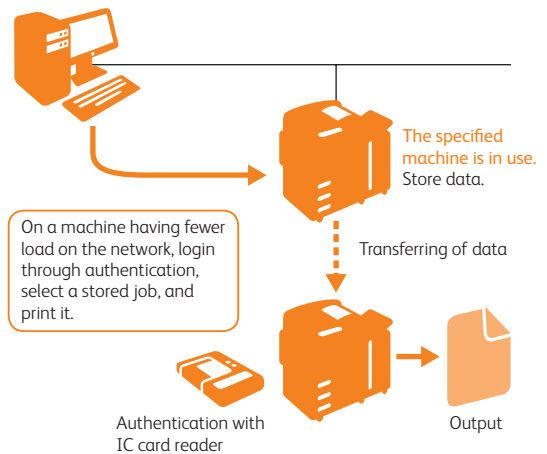


External IC Card Reader

## Printable from Any Machine on Demand

After a job has been sent to the device, users can choose the “Server-less On-demand” feature to print it from any machine on the network on demand, simply by logging on to the machine. Even if the selected device is in use, users can choose their job from another machine and print it. No dedicated server is required for this feature. It is also possible to use up to five devices in this way by grouping them – for example, by floor or workgroup.

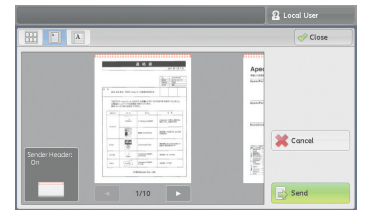
\* Optional.



## Leverage of Timely Information with Paperless Fax

### [Receiving]

Received fax documents can be sorted into different device folders by dial number or G3ID. After viewing the thumbnails, users can choose to print only designated documents. As soon as fax documents are received in a folder, they can also be sent as a fax, printed, sent as an e-mail, transferred via FTP, and transferred via SMB automatically.



### [Sending]

Direct Fax (sending fax directly from PC) can also be used. Sent fax documents can also be saved as PDF and sent as e-mail attachments.

### [Reject]

Allows administrators to block incoming faxes from certain numbers and anonymous numbers.

## Offices Using Five or More Devices

By utilising ApeosWare Management Suite\*, administrators can distribute print drivers, restrict use of the device to certain accounts, gather print counts, improve running efficiency, automate distribution processes and manage job logs. These applications make it a simple task to plan and manage usage of the device, while maintaining full security.

\* Software sold separately.

# User- and environment-friendly

## "Real Green" Solutions

Fuji Xerox is committed to real, measurable green solutions in office environments. These can be achieved while at the same time improving user convenience and efficiency during operations.



## "Smart Energy Management" for Specific Power Use

The new DocuCentre-V series uses Smart Energy Management to power only the functions requested by users. This reduces power consumption and CO<sub>2</sub> emissions. To minimise noise, the scanning and output devices do not generate noise when not operating.

## Fast Wake-up of Control Panel

Thanks to Smart Energy Management, the control panel is displayed within two seconds, even during wake-up from Sleep Mode.

## From Sleep to Awake Instantly

Fuji Xerox has achieved a fast wake-up by improving the software initialisation process. Thanks to Smart Energy Management, users can adjust settings while the device wakes up. The machine responds almost immediately on demand.

## Adoption of LED to Save Energy yet Output Higher Quality

Fuji Xerox has utilised LED technology for the exposure unit for low power consumption and a smaller print head, which can image at 1200 x 2400 dpi. It also uses fewer moving parts, so it is quieter during operation.

## Noise aware

Fuji Xerox continually addresses the problem of noise in the business environment. We have introduced advanced technologies to our "Quiet Flagship Model" such as the Duplex Automatic Document Feeder\*, incorporating new image processing.


\* Duplex Automatic Document Feeder B1-PC

## Excellent TEC Value

The DocuCentre-V series has achieved 2.1 kWh<sup>-1</sup> for TEC value<sup>2</sup>, conforming to International ENERGY STAR<sup>®</sup> Program standards and reducing power consumption.

\*1: For DocuCentre-V C4476 Model .

\*2: Value measured by the test defined in International ENERGY STAR<sup>®</sup> Program.

TEC value		CPS Model
		DocuCentre-V C4476 2.1 kWh
		DocuCentre-V C5576 2.7 kWh
		DocuCentre-V C6676 3.5 kWh
		DocuCentre-V C7776 3.7 kWh

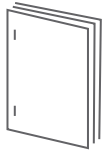


# Extra Functionality in Finishing



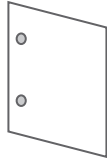
A “Z Fold Half sheet” folding capability is now available.

Further Finishing Functions with Introduction of C3 Finisher that supports “Tri-fold”



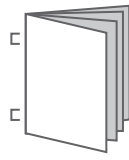
## Stapling

Stapling multiple pages documents, such as meeting materials into sets, is available.



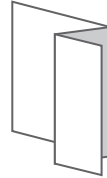
## Punch

A hole punch process can be used for filing documents in binders.



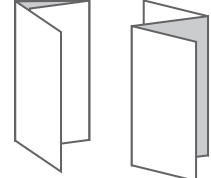
## Saddle Staple

This Single Fold and stapling process is ideal for creating catalogues and booklets.



## Z Fold Half sheet\*

Z Fold Half sheet is a useful method to combine A3 documents into A4 size.



## Tri-fold\*

The C-fold is useful when creating materials enclosed in envelopes.

\* Folder Unit CD1 is required.

	Finisher A1	Finisher B1 + Booklet Maker Unit for Finisher-B1	C3 Finisher	C3 Finisher with Booklet Maker	C3 Finisher with Booklet Maker + Folder Unit CD1
Stapling thickness	50 sheets* <sup>1</sup>	50 sheets	50 or 65 sheets* <sup>2</sup>	50 or 65 sheets* <sup>2</sup>	50 or 65 sheets* <sup>2,3</sup>
Punch	—	2/4 hole punch* <sup>4</sup> or 2/3 hole punch* <sup>5</sup>	2/4 hole punch* <sup>6</sup> or 2/3 hole punch* <sup>7</sup>	2/4 hole punch* <sup>6</sup> or 2/3 hole punch* <sup>7</sup>	2/4 hole punch* <sup>6</sup> or 2/3 hole punch* <sup>7</sup>
Saddle Staple	—	○* <sup>8</sup>	—	○	○
Single Fold	—	○* <sup>8</sup>	—	○	○
Tri-fold	—	—	—	—	○* <sup>9</sup>
Z Fold Half sheet	—	—	—	—	○* <sup>9</sup>
Tray capacity* <sup>10</sup>	Output tray	—	500 sheets	500 sheets	500 sheets
	Finisher tray	500 sheets	2000 sheets	3000 sheets	1500 sheets

\*1: A4 size. Max. 30 sheets with B4 or larger. Single stapling (front/angled) only.

\*2: C3 Finisher Staple Unit 65 Sheets is required.

\*3: Finisher capacity decreases when Z-fold half sheets are mixed.

\*4: 2/4 Hole Punch Kit for Finisher-B1 is required.

\*5: US 2/3 Hole Punch Kit for Finisher-B1 is required.

\*6: Punch Unit 2H/4H is required.

\*7: Punch Unit US 2H/3H is required.

\*8: Booklet Maker Unit for Finisher-B1 is required. For the features of Saddle Staple or Single Fold, Finisher B1 does not perform folding but perform scoring.

\*9: Folder Unit CD1 is required.

\*10: 64 gsm paper

Note: C3 Finisher or C3 Finisher with Booklet Maker requires Transport Unit H1.

Note: Finisher A1 can only be attached to DocuCentre-V C3376, C3374 and C2276.

Note: Finisher B1 can only be attached to DocuCentre-V C5574, C4476, C3376, C3374 and C2276.

## Classifying of the Destination Trays

When Inner Output Tray **1** or Side Tray **2** is attached, tray can be specified per job, i.e. Copy, Print, or Fax. If your organization has several fax lines, tray can also be assigned for each line.



## High-Capacity Feed

The new DocuCentre-V series uses Tandem Tray **3**, which can accommodate up to 3090 sheets. In addition, an optional High Capacity Feeder which can hold up to 2030 sheets\* of A4-size media (one tray) **4** is available. It supports large-volume output demands.

\* 80 gsm paper.



# Specifications of DocuCentre-V C7776 / C6676 / C5576 / C4476 / C3376 / C3374 / C2276

## Basic Specifications/Copy Function

Item	DocuCentre-V C7776	DocuCentre-V C6676	DocuCentre-V C5576	DocuCentre-V C4476	DocuCentre-V C3376	DocuCentre-V C3374	DocuCentre-V C2276
Type	Console						
Memory capacity	4 GB (Max: 4 GB)						
Hard disk capacity <sup>1</sup>	160 GB or larger (Usable space: 128 GB)			Optional: 160 GB or larger (Usable space: 128 GB)			
Colour Capability	Full Colour						
Scan Resolution	600 x 600 dpi						
Printing Resolution	1200 x 2400 dpi (High Resolution Photo) 600 x 600 dpi (Text / Text-Photo / Photo / Map)						
Warm-up Time	30 seconds or less, 24 seconds or less if the main power is on (At room temperature 23°C)						
Original Size	Maximum of 297 x 432 mm (A3, 11 x 17") for both Sheet and Book						
Paper Size	Max	SRA3 (320 x 450 mm), 12 x 18" (305 x 457 mm), A3 [12 x 19" (305 x 483 mm) when using Bypass Tray]					
	Min	A5 [Postcard (100 x 148 mm) and Quadrangle NO.3 Envelope (120 x 235 mm) when using Bypass Tray]					
	Image loss width	Lead Edge 4.0 mm, Trail Edge 2.0 mm, Right & Left Edges 2.0 mm					
Paper Weight <sup>2</sup>	Paper Tray	52 to 300 gsm					
	Bypass Tray	52 to 300 gsm					
First Copy Output Time	B/W <sup>3</sup>	3.3 sec.	3.3 sec.	3.7 sec.	4.4 sec.	4.9 sec.	6.6 sec.
	Colour <sup>4</sup>	4.1 sec.	4.1 sec.	5.2 sec.	5.7 sec.	6.4 sec.	8.7 sec.
Continuous Copy Speed <sup>5</sup>	A4 LEF / BS LEF	B/W: 70 ppm Colour: 70 ppm	B/W: 65 ppm Colour: 65 ppm	B/W: 55 ppm Colour: 50 ppm	B/W: 45 ppm Colour: 45 ppm	B/W: 35 ppm Colour: 35 ppm	B/W: 25 ppm Colour: 25 ppm
	A4 / B5	B/W: 50 ppm Colour: 50 ppm	B/W: 46 ppm Colour: 46 ppm	B/W: 39 ppm Colour: 36 ppm	B/W: 32 ppm Colour: 32 ppm	B/W: 27 ppm Colour: 27 ppm	B/W: 19 ppm Colour: 19 ppm
	B4	B/W: 40 ppm Colour: 40 ppm	B/W: 37 ppm Colour: 37 ppm	B/W: 32 ppm Colour: 29 ppm	B/W: 26 ppm Colour: 26 ppm	B/W: 23 ppm Colour: 23 ppm	B/W: 16 ppm Colour: 16 ppm
	A3	B/W: 35 ppm Colour: 35 ppm	B/W: 32 ppm Colour: 32 ppm	B/W: 27 ppm Colour: 25 ppm	B/W: 22 ppm Colour: 22 ppm	B/W: 20 ppm Colour: 20 ppm	B/W: 17 ppm Colour: 14 ppm
Paper Tray Capacity <sup>6</sup>	Standard	[C7776 / C6676] Tandem Tray Model: 500 sheets x 2-tray + 867 sheets + 1133 sheets + Bypass Tray 90 sheets [C5576 / C4476 / C3376 / C3374 / C2276] Tandem Tray Model: 500 sheets x 2-tray + 867 sheets + 1133 sheets + Bypass Tray 90 sheets 4 Tray Model: 500 sheets x 4-tray + Bypass Tray 90 sheets					
	Optional	HCF B1: 2030 sheets					
	Max	[C7776 / C6676] Tandem Tray Model: 5120 sheets (Standard + HCF B1) [C5576 / C4476 / C3376 / C3374 / C2276] Tandem Tray Model: 5120 sheets (Standard + HCF B1) 4 Tray Model: 4120 sheets (Standard + HCF B1)					
Output Tray Capacity <sup>7</sup>	Upper Center: 250 sheets (A4 LEF), Lower Center: 250 sheets (A4 LEF)						
Power Supply	AC220-240 V +/- 10 %, 10 A, 50/60 Hz common						
Maximum Power Consumption	[C7776 / C6676] 2.2 kW or less (AC220 V +/- 10 %) 2.4 kW or less (AC240 V +/- 10 %) Sleep Mode: 1.3 W or less (AC220 V +/- 10 %) Ready Mode: 119 W or less (AC220 V +/- 10 %) [C5576 / C4476] 2.2 kW or less (AC220 V +/- 10 %) 2.4 kW or less (AC240 V +/- 10 %) Sleep Mode: 1.3 W or less (AC220 V +/- 10 %) Ready Mode: 105 W or less (AC220 V +/- 10 %) [C3376 / C3374 / C2276] 2.2 kW or less (AC220 V +/- 10 %) 2.4 kW or less (AC240 V +/- 10 %) Sleep Mode: 1.3 W or less (AC220 V +/- 10 %) Ready Mode: 55 W or less (AC220 V +/- 10 %)						
Dimensions	[C7776 / C6676 / C5576 / C4476 / C3376 / C3374 / C2276] W 640 x D 699 x H 1143 mm (when Duplex Automatic Document Feeder B1-PC is installed) [C3376 / C3374 / C2276] W 640 x D 699 x H 1128 mm (when Duplex Automatic Document Feeder B1-C is installed)						
Weight <sup>8</sup>	148 kg	148 kg	135 kg <sup>9</sup>	135 kg <sup>9</sup>	130 kg <sup>9</sup>	130 kg <sup>9</sup>	130 kg <sup>9</sup>

<sup>1</sup> The Storage Hard disk capacity is not totally available for customers.

<sup>2</sup> It is recommended to use Fuji Xerox recommended paper. Correct print output may not be possible depending on the requirement.

<sup>3</sup> A4 LEF / Monochrome priority mode.

<sup>4</sup> A4 LEF / Colour priority mode.

<sup>5</sup> The speed may be reduced due to the image quality adjustment.

<sup>6</sup> 80 gsm paper.

<sup>7</sup> 64 gsm paper.

<sup>8</sup> Excluding Toner Cartridge.

<sup>9</sup> 4 Tray Model.

## Print Function

Item	Description
Type	Built-in type
Continuous Print Speed <sup>1</sup>	Same as the Basic Specifications / Copy Function
Print Resolution	600 x 600 dpi, 1200 x 1200 dpi, 1200 x 2400 dpi
Page	Standard PCL5 / PCL6
Description Language	Optional Adobe® PostScript® 3™
Supported Operating System	Standard (PCL Driver) Windows® 10 (32bit), Windows® 10 (64bit), Windows® 8.1 (32bit), Windows® 8.1 (64bit), Windows® 8 (32bit), Windows® 8 (64bit), Windows® 7 (32bit), Windows® 7 (64bit), Windows Vista® (32bit), Windows Vista® (64bit), Windows Server® 2012 R2 (64bit), Windows Server® 2012 (64bit), Windows Server® 2008 R2 (64bit), Windows Server® 2008 (32bit), Windows Server® 2008 (64bit), Windows Server® 2003 (32bit), Windows Server® 2003 (64bit) Standard (Mac OS X Driver) OS X 10.10/10.9/10.8, Mac OS X 10.7/10.6/10.5 Optional (Adobe® PostScript® 3™ Driver) Windows® 10 (32bit), Windows® 10 (64bit), Windows® 8.1 (32bit), Windows® 8.1 (64bit), Windows® 8 (32bit), Windows® 8 (64bit), Windows® 7 (32bit), Windows® 7 (64bit), Windows Vista® (32bit), Windows Vista® (64bit), Windows Server® 2012 R2 (64bit), Windows Server® 2012 (64bit), Windows Server® 2008 R2 (64bit), Windows Server® 2008 (32bit), Windows Server® 2008 (64bit), Windows Server® 2003 (32bit), Windows Server® 2003 (64bit) OS X 10.10/10.9/10.8, Mac OS X 10.7/10.6/10.5
Interface	Standard Ethernet 100BASE-TX / 10BASE-T, USB2.0 Optional Ethernet 1000BASE-T, Bidirectional Parallel (IEEE1284-B)

<sup>1</sup> The speed may be reduced due to the image quality adjustment. The printing speed may be reduced depending on the document.

## Scan Function ( Optional )

Item	Description
Type	Colour Scanner
Scan Resolution	600 x 600 dpi, 400 x 400 dpi, 300 x 300 dpi, 200 x 200 dpi
Scan Speed <sup>1</sup>	
Duplex Automatic Document Feeder B1-C	[ C3376 / C3374 / C2276 ] B/W: 70 ppm, Colour: 70 ppm [Fuji Xerox Standard Paper (A4 LEF), 200dpi, to Folder.]
Duplex Automatic Document Feeder B1-PC <sup>2</sup>	B/W: 80 ppm, Colour: 80 ppm (1 pass, 2 sided scanning: B/W: 150 ppm <sup>3</sup> , Colour: 150 ppm <sup>3</sup> ) [Fuji Xerox Standard Paper (A4 LEF), 200dpi, to Folder.]
Interface	Standard Ethernet 100BASE-TX / 10BASE-T Optional Ethernet 1000BASE-T

<sup>1</sup> The scanning speed varies depending on the documents.

<sup>2</sup> Simplex scanning speed of Duplex Automatic Document Feeder B1-PC is reduced when Paper Security Function is enabled.

<sup>3</sup> 160 ppm for both B/W and colour when Quiet Mode is disabled. This setting can be changed to suit the customer's usage.

## Duplex Automatic Document Feeder B1-C

Item	DocuCentre-V C3376	DocuCentre-V C3374	DocuCentre-V C2276
Original Size	Max: A3, 11 x 17" Min: A5 <sup>1</sup>		
Paper Weight	38 to 128 gsm (In Duplex: 50 to 128 gsm)		
Capacity <sup>2</sup>	110 sheets		
Feeding Speed (A4 LEF Simplex)	B/W: 35 ppm Colour: 35 ppm	B/W: 30 ppm Colour: 30 ppm	B/W: 25 ppm Colour: 25 ppm

<sup>1</sup> The minimum custom size is 125 x 85 mm.

<sup>2</sup> 64 gsm paper.

## Duplex Automatic Document Feeder B1-PC ( Optional )

Item	DocuCentre-V C7776	DocuCentre-V C6676	DocuCentre-V C5576	DocuCentre-V C4476	DocuCentre-V C3376	DocuCentre-V C3374	DocuCentre-V C2276
Original Size	Max: A3, 11 x 17" Min: A5 <sup>1</sup>						
Paper Weight	38 to 128 gsm (In Duplex: 50 to 128 gsm)						
Capacity <sup>2</sup>	130 sheets						
Feeding Speed (A4 LEF Simplex)	B/W: 70 ppm Colour: 70 ppm	B/W: 65 ppm Colour: 65 ppm	B/W: 55 ppm Colour: 50 ppm	B/W: 45 ppm Colour: 45 ppm	B/W: 35 ppm Colour: 35 ppm	B/W: 30 ppm Colour: 30 ppm	B/W: 25 ppm Colour: 25 ppm
Dimensions	W 560 x D 498 x H 140 mm						
Weight	11 kg						

<sup>1</sup> The minimum custom size is 125 x 85 mm.

<sup>2</sup> 64 gsm paper.

## Fax Function ( Optional )

Item	Description
Original Size	Max: A3, 11 x 17"; Long document (Longest 600 mm)
Recording Paper Size	Max: A3, 11 x 17" Min: A5
Transmission Time	2 seconds and more but fewer than 3 seconds <sup>1</sup>
Transmission Mode	ITU-T G3
Applicable Lines	Telephone subscriber line, PBX, Fax communication (PSTN), Maximum 3 ports <sup>2</sup> (G3-3 ports)

<sup>1</sup> When A4 size document with approximately 700 characters is transmitted in standard image-quality (8 x 3.85 lines / mm) and in high-speed mode (28.8 kbps or faster, JBIG). Only indicates the time for transmitting the image information and does not include the communication control time. The total communication time will vary depending on the contents of the document, the type of machine receiving the fax, and line condition.

<sup>2</sup> No. of FAX lines is up to 3 ports. Port refers to number of channels for FAX.

## HCF B1 ( Optional )

Item	Description
Paper Size	A4 LEF, Letter LEF, B5 LEF
Paper Weight	55 to 216 gsm
Feeding Capacity / Number of Tray <sup>1</sup>	2030 sheets x 1-tray
Dimensions	W 389 x D 610 x H 380 mm
Weight	29 kg

<sup>1</sup> 80 gsm paper.

## Side Tray

Item	Description
Paper Capacity <sup>1</sup>	100 sheets
Dimensions	W 353 x D 469 x H 198 mm

<sup>1</sup> 64 gsm paper.

## Finisher-A1 ( Optional )

Item	Description
Type	Sort (Offset available) / Stack (Offset available)
Paper Size	Max: A3, 11 x 17" Min: Postcard (100 x 148 mm)
Paper Weight <sup>1</sup>	52 to 220 gsm
Paper Capacity <sup>2</sup>	[Without Stapling] A4: 500 sheets, B4: 250 sheets, A3 or larger: 200 sheets, Mixed Size Stacking <sup>3</sup> : 250 sheets [With Stapling] 30 sets
Staple	Capacity: A4: 50 sheets (90 gsm or less) B4 or larger: 30 sheets (90 gsm or less)
	Paper Size: Max: A3, 11 x 17" Min: B5 LEF
	Position: Single stapling
Dimensions	W 559 x D 448 x H 246 mm
Weight	12 kg

Note The unit cannot be installed on DocuCentre-V C7776/C6676/C5576/C4476.

<sup>1</sup> Documents may not be printed correctly depending on usage conditions. (52 to 55 gsm)

<sup>2</sup> 64 gsm paper.

<sup>3</sup> When larger size sheets are stacked on top of smaller size sheets.

## Finisher-B1 ( Optional )

Item	Description
Type	Sort (Offset available) / Stack (Offset available)
Paper Size <sup>1</sup>	Max: A3, 11 x 17" Min: B5 LEF
Paper Weight <sup>2</sup>	52 to 220 gsm
Paper Capacity <sup>3</sup>	[Without Stapling] A4: 2000 sheets, B4 or larger: 1000 sheets, Mixed Size Stacking <sup>4</sup> : 300 sheets [With Stapling] A4: 100 sets or 1000 sheets <sup>5</sup> , B4 or larger: 75 sets or 750 sheets [With Booklet Finishing <sup>6</sup> ] 50 sets or 600 sheets [With Scoring <sup>6</sup> ] 500 sheets
Staple	Capacity: 50 sheets (90 gsm or less)
	Paper Size: Max: A3, 11 x 17" Min: B5 LEF
	Position: Single stapling, Dual stapling
Punch <sup>7</sup>	Number of Holes: 2-hole / 4-hole punch or 2-hole / 3-hole punch (US Specifications)
	Paper Size: A3, 11 x 17", B4, A4 <sup>8</sup> , A4 LEF, Letter <sup>8</sup> , Letter LEF, B5 LEF
	Paper Weight: 55 to 200 gsm
Booklet Finishing <sup>5</sup>	Capacity: Saddle Staple: 15 sheets, Scoring: 5 sheets
	Paper Size: Max: A3, 11 x 17" Min: A4, Letter
	Paper Weight: Saddle Staple: 64 to 80 gsm, Scoring: 64 to 105 gsm
Dimensions <sup>9</sup>	W 620 x D 552 x H 987 mm With Booklet Finisher: W 620 x D 597 x H 1057 mm
Weight	28 kg With Booklet Finisher: 37 kg

Note The unit cannot be installed on DocuCentre-V C7776/C6676.

<sup>1</sup> Paper size is smaller than B5, and larger than A3, 11 x 17" can be output from the Center Tray.

<sup>2</sup> Documents may not be printed correctly depending on usage conditions. (52 to 55 gsm)

<sup>3</sup> 64 gsm paper.

<sup>4</sup> When larger size sheets are stacked on top of smaller size sheets.

<sup>5</sup> 75 sets or 750 sheets with dual stapling.

<sup>6</sup> The Booklet Finishing function requires the optional Finisher-B1 Booklet unit. After a job with the Booklet Finishing function specified has been output, the next job may not be delivered until the sheets are removed from the output tray. Also, if larger size sheets are stacked on top of smaller size sheets after a job with the Booklet Finishing function specified has been run, the next job may not be delivered until the sheets are removed from the output tray.

<sup>7</sup> The Punch function requires the optional Finisher-B1 Punch unit for 2-hole / 4-hole punch or Finisher-B1 Punch unit for 2-hole / 3-hole punch (US Specifications).

<sup>8</sup> 3-hole punch is not applicable.

<sup>9</sup> Inner connector within the body is excluded.

## C3 Finisher / C3 Finisher with Booklet Maker ( Optional )

Item	C3 Finisher	C3 Finisher with Booklet Maker
Type	Output Tray: Sort / Stack Finishing Tray: Sort (Offset available) / Stack (Offset available) Booklet Tray: —	Sort / Stack
Paper Size <sup>1</sup>	Output Tray: Max: 12 x 19" (305 x 483 mm) Min: Postcard (100 x 148 mm) Finishing Tray: Max: 12 x 19" (305 x 483 mm) Min: B5 LEF Booklet Tray: —	Max: 12 x 18" (305 x 457 mm) Min: B5
Paper Weight <sup>2</sup>	Output Tray: 52 to 300 gsm Finishing Tray: 52 to 300 gsm Booklet Tray: —	60 to 105 gsm <sup>3</sup>
Paper Capacity <sup>4</sup>	Output Tray: 500 sheets (A4) Finishing Tray: [Without Stapling] A4: 3000 sheets, B4 or larger: 1500 sheets, Mixed Size Stacking <sup>5</sup> : 300 sheets [With Stapling] A4: 200 sets or 3000 sheets, B4 or larger: 100 sets or 1500 sheets, Mixed Size Stacking <sup>5</sup> : 70 sets or 200 sheets Booklet Tray: —	[Without Stapling] A4: 1500 sheets, B4 or larger: 1500 sheets, Mixed Size Stacking <sup>5</sup> : 300 sheets [With Stapling] A4: 200 sets or 1500 sheets, B4 or larger: 100 sets or 1500 sheets, Mixed Size Stacking <sup>5</sup> : 70 sets or 200 sheets 20 sets <sup>6</sup>
Staple	Capacity: 50 sheets (90 gsm or less) <sup>7</sup> Paper Size: Max: A3, 11 x 17" Min: B5 LEF Position: Single stapling, Dual stapling	
Punch <sup>8</sup>	Number of Holes: 2-hole / 4-hole punch or 2-hole / 3-hole punch (US Specifications) Paper Size: A3, 11 x 17", B4, A4 <sup>9</sup> , A4 LEF, Letter <sup>9</sup> , Letter LEF, B5 LEF, 7.25 x 10.5" (184 x 267 mm), 8 x 10" (203 x 254 mm), 16K (194 x 267 mm), Cover A4 (223 x 297 mm), 9 x 11" (229 x 279 mm), 215 x 315 mm, 8.5 x 13" (216 x 330 mm), Legal, 11 x 15" (279 x 381 mm), 8K (267 x 388 mm) Paper Weight: 52 to 200 gsm	
Booklet Finishing	Capacity: — Paper Size: — Paper Weight: —	Saddle Staple: 16 sheets <sup>10</sup> Middle-Fold: 5 sheets Single Fold: 1 sheet Max: SRA3 (320 x 450 mm), 12 x 18" (305 x 457 mm) Min: B5 Saddle Staple: 60 to 105 gsm <sup>11,12</sup> Middle-Fold: 60 to 105 gsm <sup>11,12</sup> Single Fold: 60 to 105 gsm
Dimensions <sup>13</sup>	W 730 x D 589 x H 1056 mm When Folder Unit CD1 is installed: W 965 x D 726 x H 1056 mm	W 790 x D 589 x H 1056 mm When Folder Unit CD1 is installed: W 1025 x D 726 x H 1056 mm
Weight	44 kg When Folder Unit CD1 is installed: 98 kg	61 kg When Folder Unit CD1 is installed: 115 kg

Note C3 Finisher or C3 Finisher with Booklet Maker requires Transport Unit H1.

<sup>1</sup> Paper less than B5 size is delivered from the Center Tray.

<sup>2</sup> Documents may not be printed correctly depending on usage conditions. (52 to 55 gsm)

<sup>3</sup> Cover sheets can be up to 256 gsm.

<sup>4</sup> 64 gsm paper.

<sup>5</sup> When larger size sheets are stacked on top of smaller size sheets.

<sup>6</sup> When the output paper size is the same.

<sup>7</sup> Up to 65 sheets can be stapled when the optional C3 Finisher Staple Unit 65 Sheets is installed. However, depending on the paper type, incorrect stapling such as uneven edge alignment of sets may occur.

<sup>8</sup> Optional.

<sup>9</sup> 3-hole punch is not applicable.

<sup>10</sup> Saddle Staple capacity varies depending on how heavy the cover is. Booklet may not be tightly closed depending on the size or type of the paper.

<sup>11</sup> Covers can be up to 256 gsm (Thick Paper 2) for saddle staple during printing.

<sup>12</sup> Printed covers can be up to 169 gsm (Thick Paper 1) for middle-fold or saddle staple during copying, while blank covers can be up to 256 gsm (Thick Paper 2).

<sup>13</sup> Inner connector within the body is excluded.

## Folder Unit CD1 ( Optional )

Item	Description
Z Fold	Paper Size: A3, 11 x 17", B4
Half Sheet	Paper Weight: 60 to 90 gsm
Tri-fold	Paper Size: A4, Letter Paper Weight: 60 to 90 gsm Paper Capacity <sup>1</sup> : 40 sheets
Power Supply <sup>2</sup>	AC220-240 V +/- 10 %, 0.6 A, 50/60 Hz common
Maximum Power	144 W or less (AC220-240 V +/- 10%)
Consumption	
Dimensions	W 232 x D 726 x H 991 mm
Weight	53 kg

<sup>1</sup> 64 gsm paper.

<sup>2</sup> Power supply separate from the main unit is required.

### Notes

- 1) If the storage media (such as hard disk drives) of the base unit fail, loss of received data, accumulated data, registered setting data, etc. may occur. In no event shall Fuji Xerox be liable for any damages whatsoever arising from loss of data.
- 2) Functional spare parts will be available for at least 7 years after the product is no longer manufactured.
- 3) The product specifications, appearance and other details in this brochure are subject to change without notice for improvements.

All product names and company names mentioned in this brochure are trademarks or registered trademarks of their respective companies.

**Reproduction Prohibitions** Please note that reproduction of the following is prohibited by law : Domestic and foreign currencies, government-issued securities, and national bonds and local bond certificates. Unused postage stamps, post cards, etc. Certificate stamps stipulated by law. Reproducing works forming the subject matter of copyright (literary works, musical works, paintings, engravings, maps, cinematographic works, drawings, photographic works, etc.) is not permitted unless the reproduction is for the purpose of personal use, family use or other similar uses within a limited circle.



Adobe PostScript 3



**For Your Safety**

Before using the product, read the Instruction Manual carefully for proper use. Use the product with the power source and voltage specified. Be sure to establish ground connection. Otherwise, electronic shock may result in the case of a failure or short circuit.

**astragraphia**

member of **ASTRA**

**PT ASTRA GRAPHIA TBK**

Head Office (021) 390 9444 • Jakarta 1, 2, 3 (021) 65704072 • Jakarta 4 (021) 7829182 • Jakarta 5, 6, 7 (021) 522 0030 • Bogor (021) 837 2705 • Tangerang (021) 552 6818 • Cilegon (0254) 8484251 • Karawang (021) 826 06042 • Bandung (022) 420 1032 • Cirebon (0231) 116 087 • Semarang (024) 842 5460 • Solo (0271) 710 186 • Yogyakarta 0815 7552 4041 • Purwokerto (0281) 625 270 • Tegal (021) 415 1458 • Surabaya 1 (031) 534 8181 • Kediri 0813 353 03512 • Gresik 0857 4180 5789 • Madiun 0852 201 66303 • Surabaya 2 (031) 534 0175 • Malang 0856 994 170546 • Jember 0812 323 8189 • Pasuruan 0815 9101 6587 • Denpasar (0361) 410 277 • Mataram (0370) 645 582 • Kupang (0380) 840 263 • Benete 0812 382 6351 • Dili, Timor Leste (670) 723 4726 • Medan (061) 787 1000 • Banda Aceh 0856 941 70885 • Pematang Siantar 0856 9417 0082 • Rantau Prapat 0856 9417 0872 • Sibolga 0856 9417 0879 • Batam (0778) 412 173 • Bintan 0813 6315 7231 • Pekanbaru (0761) 335 19 • Pangkalan Kerinci (0761) 43 969 • Duri 0812 670 9683 • Padang 0811 665 8551 • Perawang 0812 764 8509 • Muara Bungo 0813 677 29908 • Dumai 0853 646 77791 • Jambi 0812 903 18040 • Palembang (0711) 355 100 • Bangka Belitung 0819 955 33557 • Tanjung Enim (0734) 451 552 • Lampung (0721) 261 674 • Bengkulu 0821 8149 9578 • Balikpapan (0542) 733 307 • Samarinda 0821 529 30349 • Tarakan (0551) 221 08 • Berau (0554) 257 63 • Bontang (0548) 303 6692 • Sangatta (0549) 224 56 • Pontianak (Jakarta 3) 0811 577 7140 • Banjarmasin (0511) 325 2520 • Palangkaraya (0536) 323 5834 • Batu Licin (0518) 713 02 • Tanjung (0526) 202 2827 • Makassar (0411) 811 18111 • Kendari (0401) 324 582 • Sorowako 0853 9697 9400 • Ambon 0811 490 551 • Biak 0812 485 6266 • Jayapura (0967) 523 349 • Timika 0813 443 91061 • Manokwari 0812 485 6266 • Manado (0431) 857 643 • Palu 0821 9009 9010 • Sorong (0951) 331 569 • Luwuk 0822 9123 9723 • Gorontalo 0853 202 28257